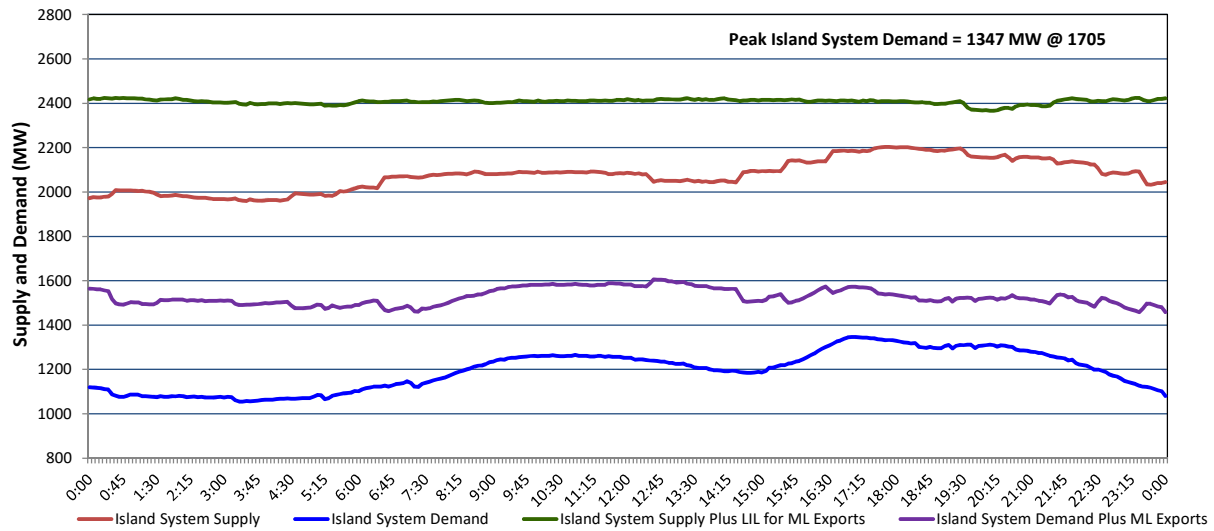


Newfoundland Labrador Hydro (NLH) Supply and Demand Status Report Filed Monday, December 16, 2024

Section 1 Island Interconnected System - Supply, Demand & Exports Actual 24 Hour System Performance For Sunday, December 15, 2024



Island Supply Notes For December 15, 2024

A As of 0000 hours, October 20, 2024, Holyrood Unit 1 unavailable due to forced extension to planned outage (170 MW).

Section 2 Island Interconnected System - Supply, Demand & Outlook

Mon, Dec 16, 2024	Island System Outlook ²	Seven-Day Forecast	Island System Daily Peak Demand (MW)	
			Forecast ⁸	Adjusted ⁶
Island System Supply: ⁴	2,172 MW	Monday, December 16, 2024	1,370	1,290
NLH Island Generation: ^{3,7}	1,525 MW	Tuesday, December 17, 2024	1,300	1,220
NLH Island Power Purchases: ⁵	95 MW	Wednesday, December 18, 2024	1,245	1,165
NP and CBPP Owned Generation:	220 MW	Thursday, December 19, 2024	1,240	1,160
LIL/ML Net Imports to Island: ⁹	332 MW	Friday, December 20, 2024	1,300	1,220
7-Day Island Peak Demand Forecast:	1,370 MW	Saturday, December 21, 2024	1,290	1,210
		Sunday, December 22, 2024	1,325	1,245

Island Supply Notes For December 16, 2024

- Notes:
1. Generation outages for running and corrective maintenance are included. These are not unusual for power system operations. They generally do not impact customer supply. Hydro schedules outages to system equipment whenever possible to coincide with periods when customer demands are low and sufficient supply reserves are available. However, from time to time equipment outages are necessary and reserves may be impacted.
 2. As of 0800 Hours.
 3. Gross continuous unit output.
 4. Gross output from all Island sources (including Note 4).
 5. NLH Island Power Purchases include: ML Imports, Exploits Generation, Rattle Brook, Star Lake, Wind Generation and capacity assistance (when applicable).
 6. Adjusted for interruptible load and the impact of voltage reduction when applicable.
 7. Due to limitations inherent in the design of combustion turbines, the output of combustion turbines may be reduced in the event that ambient temperatures exceed the threshold required for full rated output. This threshold is dependent on the design of each turbine.
 8. Does not include ML Exports.
 9. LIL Import sunk in the Island System. Actual LIL flows will be restricted by various system conditions including, but not limited to, Island Load, ML Exports and Avalon Unit status.

Section 3 Island Peak Demand and Exports Information Previous Day Actual Peak and Current Day Forecast Peak

Sun, Dec 15, 2024	Island Peak Demand ¹⁰	17:05	1,347 MW
	Exports at Peak		226 MW
	LIL Net Imports to Island		6,163 MWh
Mon, Dec 16, 2024	Forecast Island Peak Demand		1,370 MW

Notes: 10. Island Demand is supplied by NLH generation and purchases, LIL Imports plus generation owned and operated by Newfoundland Power and Corner Brook Pulp & Paper (Deer Lake Power, DLP).